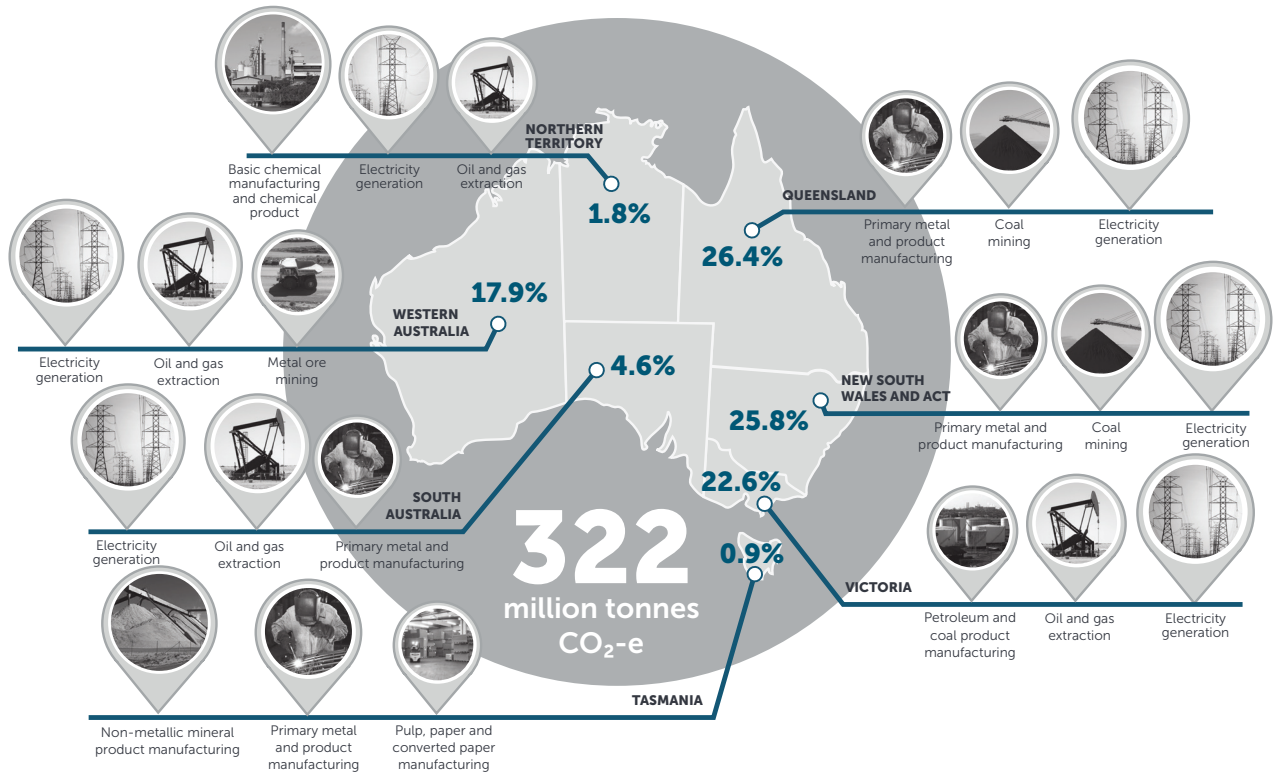




# State and territory emissions profile

## Highest emitting industries by state



The National Greenhouse and Energy Reporting (NGER) scheme is a single national framework for corporations to report greenhouse gas emissions, energy consumption and production. This captures about 60 per cent of Australia's total emissions. Emissions from the agricultural, forestry, private vehicle transport and residential sectors are not collected under the National Greenhouse and Energy Reporting scheme and are therefore not included in this data.

The state and territory emissions profile outlines details of the highest emitting industries for each state and territory.

Electricity remained the highest emitting industry in Queensland, New South Wales and ACT, Victoria, South Australia and Western Australia. Manufacturing remained the highest emitting industry in Northern Territory and Tasmania in 2014-15.